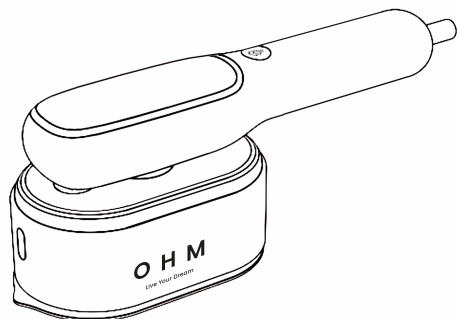


# O H M

Live Your Dream

Aura



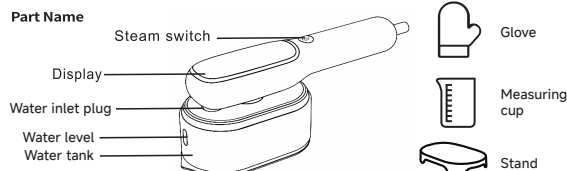
## Portable Clothes Steam Iron Instruction Manual

Please read this manual carefully before using the product.  
Please keep the manual for your reference.

### WARNING!

The heat plate generates heat at a constant temperature of about 160°C, if the fabric cannot withstand this temperature, in order to prevent scalding clothes, especially silk, cashmere, down, yarn and other fabrics that do not tolerate high temperatures, please place a clean towel between the garment and the plate before using the steam iron.

### Product description

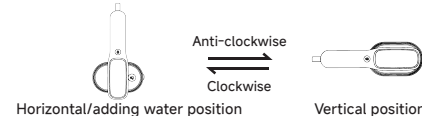


#### Attention before use

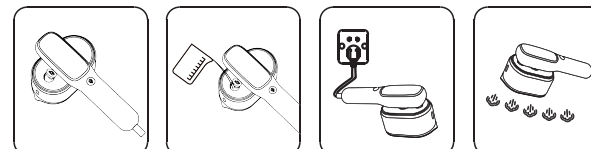
- Remove any labels or protective covers from the product.
- Completely unwind the power cord.
- When using the product for the first time, let it stand for a few minutes to remove any impurities and odours that may have been left during the manufacturing process.
- When the product is left on the stand, ensure the steam mode is off (Dry Ironing mode) to avoid high temperatures on the surface and risk of burns.
- There may be some water droplets dripping out when you use it for the first time, this is normal and will resolve after a few uses.

### How to use the product Changing the heat plate position

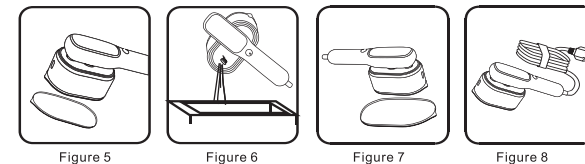
Changing between horizontal and vertical position  
Turn the water tank in the direction as indicated below.



### Using the product

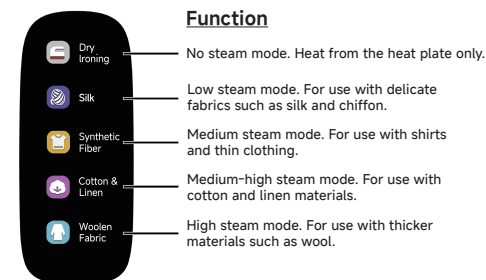


- Figure 1: Turn the water tank to the adding water position. Pull to open the water inlet plug.  
Figure 2: Fill the measuring cup with water up to the max line, carefully pour the water into the water tank and then close the inlet hole with the plug.  
Figure 3: Plug in the power supply, the 'Dry Ironing' icon on the screen will flash - this indicates that the product is heating up (preheating). During this period, pressing on the steam switch will not give any response.  
Figure 4: After approximately 30 seconds, the icon will stop flashing and you can now use the steam switch to select the desired mode. The product is now ready to use. If you need to use a hand to support the garment during the steam process then please wear the included glove to protect against the heat.



- Figure 5: When you have finished using the product, place the product on the stand with the 'Dry Ironing' mode selected so that there is no steam emitted. Do not leave it on other surfaces.  
Figure 6: After use, unplug from the mains and wait for the product to completely cool down. Once cooled, change the water tank to the adding water position, remove the water inlet plug and pour out the excess water into a sink.  
Figure 7: Wipe down the heat plate and handle with a soft, damp cloth. After wiping, place the product in room temperature to dry. Avoid wiping with abrasive materials.  
Figure 8: After it has dried, place the product on the stand for storage.

### Ironing and steam modes Press the steam switch to change modes.



#### Function

- Dry Ironing**: No steam mode. Heat from the heat plate only.
- Silk**: Low steam mode. For use with delicate fabrics such as silk and chiffon.
- Synthetic Fiber**: Medium steam mode. For use with shirts and thin clothing.
- Cotton & Linen**: Medium-high steam mode. For use with cotton and linen materials.
- Woolen Fabric**: High steam mode. For use with thicker materials such as wool.

### Troubleshooting

Problem	Possible Reasons	Troubleshooting
Not working at all	Power plug not plugged into mains. PCB is burnt out.	Check that the product is plugged in and mains switch is turned on. If it is still not working then please contact the supplier if within the warranty period.
No steam is emitted but the screen is working	The water tank is not filled with water. The ironing and steam mode is set to dry ironing mode. The steam switch is damaged. The PCB is damaged.	Ensure the water tank is adequately filled with water. Select a mode with steam enabled. If the steam is still not emitted then contact the supplier if within the warranty period.
Water leakage from the water tank	Water tank is damaged.	If within the warranty period then contact the supplier. If it is outside of the warranty period then take the product to be serviced by a professional.
Water is leaking from the product	Product water pipe is damaged.	
Heat plate is hot and works normally but the screen does not work	Screen display is damaged.	
Screen is working, steam switch is not responsive	PCB is damaged.	

#### Precautions and safety instructions:

- Before use, please read this instruction manual.
- Before use, please check the voltage required for the product matches the voltage at the mains. It must be plugged into an earthed socket.
- Before plugging the product into the mains ensure that you completely unwind the power cord.
- This product is for indoor, domestic use only. It is designed to be used as a portable electric iron and clothes steamer.
- Use the product for its intended use only.
- This product is not intended to be used by persons (including children) with reduced physical, sensory, or mental capabilities, or lack of operating experience and knowledge unless they are supervised or instructed by a responsible person to ensure safe usage.
- When the product is placed on the stand, make sure the stand is resting on a smooth, stable surface.
- Take care when emptying the water tank as there may be hot water in the water tank and the ceramic heat plate may still be hot which can cause burns.
- No chemical additives, aromas, or descaling agents should be added to the water tank, unless specified in this manual.
- When you finish using the product, place it on the stand and unplug it from the mains.
- Before unplugging the product ensure there is no steam coming from the product.
- Do not rest it on the stand and keep the steam mode on.
- Do not use the product if it has been dropped or if there is visible damage or leakage has occurred.
- Do not leave the product unattended while it is still plugged in or while it is still hot.
- Do not allow children to operate or treat this product as a toy. Supervision is necessary when it is used around children.
- Do not place the product in a place accessible to children when the temperature of the product has not cooled down.
- Do not immerse the product in water or other liquids.
- Do not touch the product with water on your hands.

- The steam emitted from the product is very hot, do not direct the steam towards the body, other people or animals.
- Do not hang the power supply cord from the edge of a surface or allow it to touch any heat generating surface.
- Do not pull on the power cord to disconnect the product from the socket. To disconnect the power supply, grasp the plug and pull out of the power supply.
- If the power supply cord is damaged it must be replaced by the supplier, it's service department or similar.
- If the product is damaged, do not continue to use it, do not disassemble it by yourself or attempt to repair the product. Contact the supplier for further evaluation. Incorrect assembly or repair could cause risk of electric shock or other injury.
- To avoid overloading the circuit, do not use other high-powered electrical appliances at the same time. If you have to use a power extension cord, please use one with a current of 10A and above. If the core of the cord is too small it may lead to overheating and cause danger.
- The product must be unplugged during cleaning.
- The product must be unplugged before filling or emptying the water tank.
- The product must be unplugged and completely cooled down before putting away for storage when not in use.
- Place the product on the stand for storage.

#### Cleaning and maintenance:

- Wipe the product with a soft cloth, avoid wiping with abrasive material such as a metal scourer.
- A neutral detergent can be used with a soft, damp cloth to remove more persistent staining.
- It is recommended that you descale the product on a monthly basis. You can do this by adding 50% white vinegar mixed with 50% water into the water tank, then plug the product into the mains, once preheating has completed, select a mode where steam is emitted and let the steam run through the heating plate. Once done, unplug the product from the mains, pour out any remaining mixture from the water tank and fill the water tank with water. Plug the product in once more and when ready, select a mode where steam is emitted and let the steam run through the heating plate. Repeat this several times until the vinegar mix smell has cleared.

#### Technical Parameters

Supplier	OHM Group Limited
Contact	customercare@myOHM.co.uk
Product	Portable Clothes Steam Iron
Model	Aura
Rated Voltage	AC 220-240V
Rated Frequency	50/60 Hz
Rated Power	1200W
Warranty	1 year